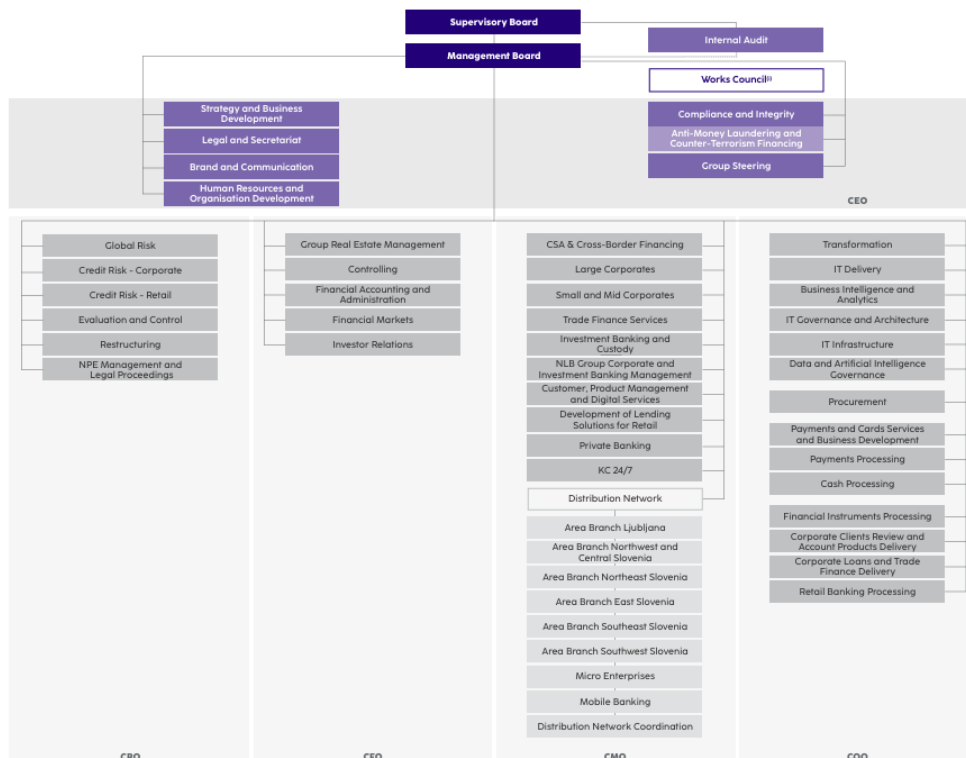


# Organisational Structure of NLB



<sup>(1)</sup> Works Council is an independent organisational unit with no subordinate or superior organisational units, and it operates in accordance with ZSDU. Note: The tasks and responsibilities of Global Risk, Compliance and Integrity, and Internal Audit are taken into account in accordance with the definitions of the (currently valid) Banking Act (ZBan-3).

Overview

**Business Report**

- Strategy
- Risk Factors & Outlook
- Performance Overview
- Segment Analysis
- NLB Group Key Members
- Risk Management
- Corporate Governance Statements

Sustainability Statement

Financial Report

## NLB Organisational Structure of NLB

Source: 2025 NLB Group Audited Annual Report, page 170 [NLB-Group-Annual-Report-2025\\_ENG.pdf](#)